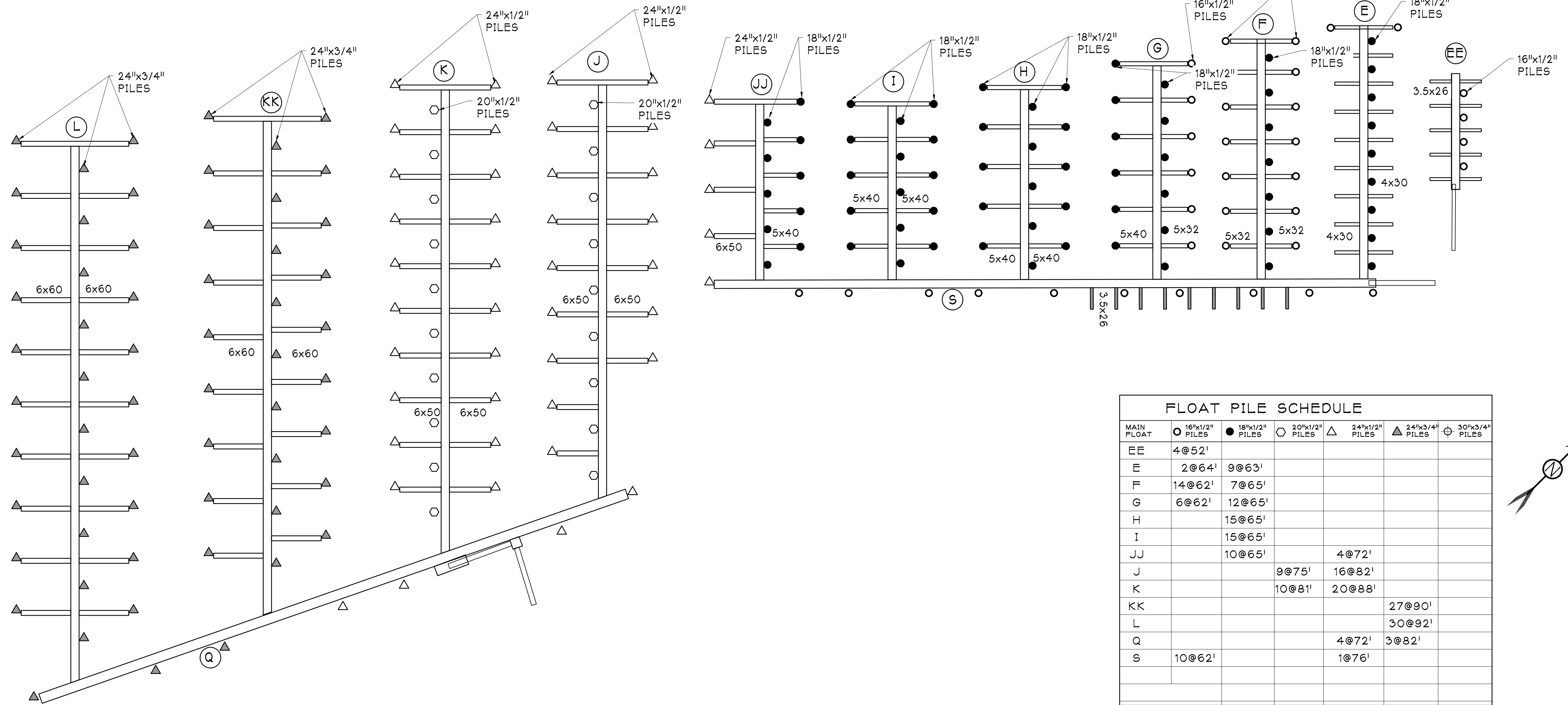


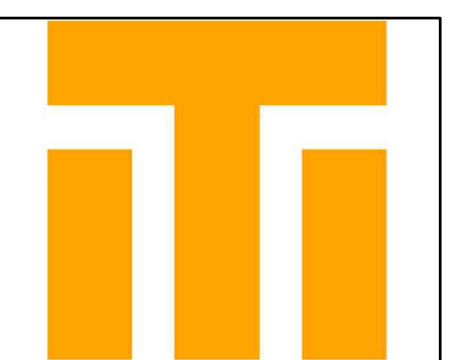
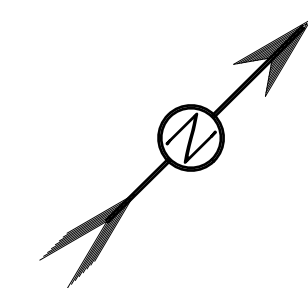
C:_Vault\Designs\Proposals\2017\SHH - St. Herman Harbor\Engineering\St. Herman Harbor Floats 3.21.2024.dwg

Plotted 7/19/2024 12:27 PM by Allen



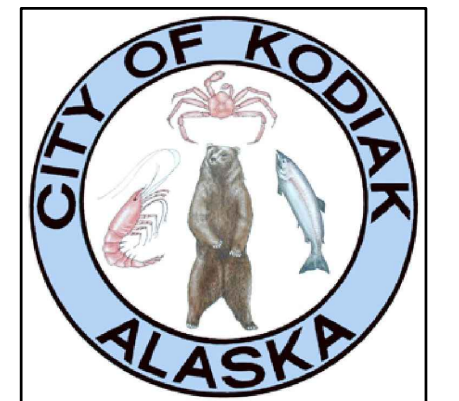
CONCEPT B

FLOAT PILE SCHEDULE						
MAIN FLOAT	16"x1/2" PILES	18"x1/2" PILES	20"x1/2" PILES	24"x1/2" PILES	24"x3/4" PILES	30"x3/4" PILES
EE	4@52'					
E	2@64'	9@65'				
F	14@62'	7@65'				
G	6@62'	12@65'				
H		15@65'				
I		15@65'				
JJ		10@65'		4@72'		
J			9@75'	16@82'		
K			10@81'	20@88'		
KK					27@90'	
L					30@92'	
Q				4@72'	3@82'	
S	10@62'			1@76'		
TOTAL	36	68	19	45	60	
EMBED, FT	22	25	25	32	32	36



Turnagain
Marine Construction
5050 CORDOVA ST. SUITE 200
ANCHORAGE, AK 99503
PHONE: (907) 261-8960

PROJECT NUMBER:
23-004



City of Kodiak
2410 MILL BAY ROAD
KODIAK, AK 99615
PHONE: (907) 486-8065

NOT FOR
CONSTRUCTION

ST. HERMAN HARBOR
REPLACE - PHASE I
KODIAK, ALASKA

REV#	DESCRIPTION	DATE

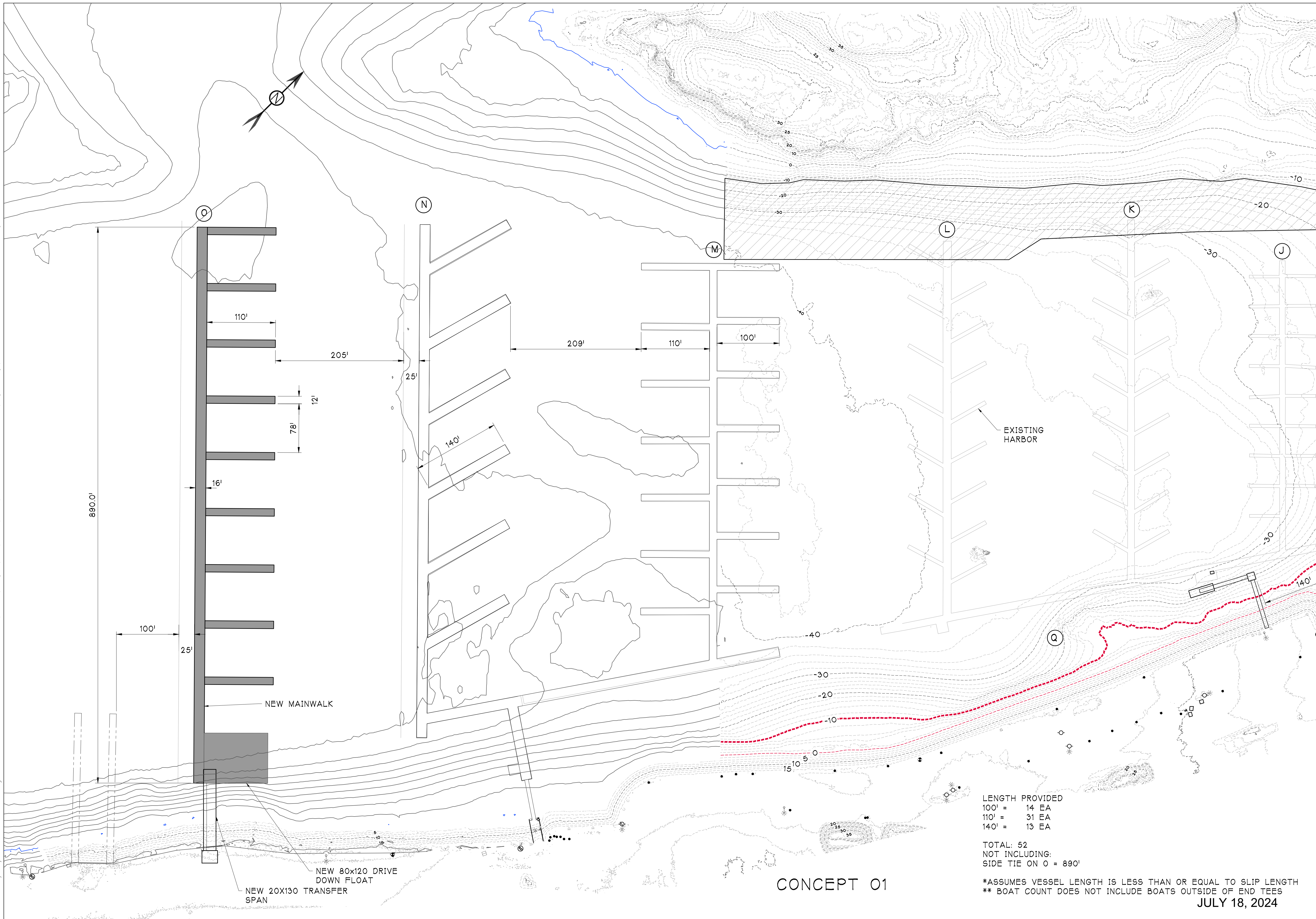
DATE:
JANUARY 25, 2024

SHEET TITLE:
CONCEPT B

SHEET NUMBER:
H-103

JULY 18, 2024

Plotted 7/19/2024 12:27 PM by Allen
 C:_Vault\Designs\Proposals\2017\SHH - St Herman Harbor\Engineering\St Herman Harbor Floats 3.21.2024.dwg



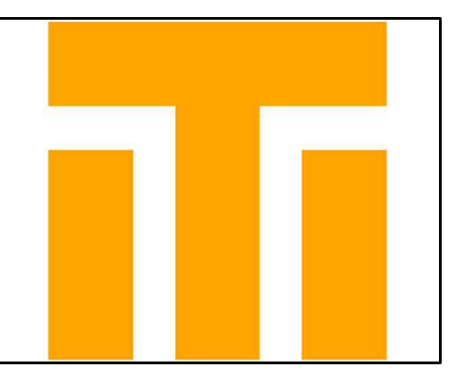
CONCEPT 01

LENGTH PROVIDED
 100' = 14 EA
 110' = 31 EA
 140' = 13 EA

TOTAL: 52
 NOT INCLUDING:
 SIDE TIE ON 0 = 890'

*ASSUMES VESSEL LENGTH IS LESS THAN OR EQUAL TO SLIP LENGTH
 ** BOAT COUNT DOES NOT INCLUDE BOATS OUTSIDE OF END TEES

JULY 18, 2024



Turnagain
 Marine Construction
 5050 CORDOVA ST. SUITE 200
 ANCHORAGE, AK 99503
 PHONE: (907) 261-8960

PROJECT NUMBER:
 23-004



City of Kodiak
 2410 MILL BAY ROAD
 KODIAK, AK 99615
 PHONE: (907) 486-8065

**NOT FOR
 CONSTRUCTION**

**ST. HERMAN HARBOR
 REPLACE - PHASE I
 KODIAK, ALASKA**

REV#	DESCRIPTION	DATE

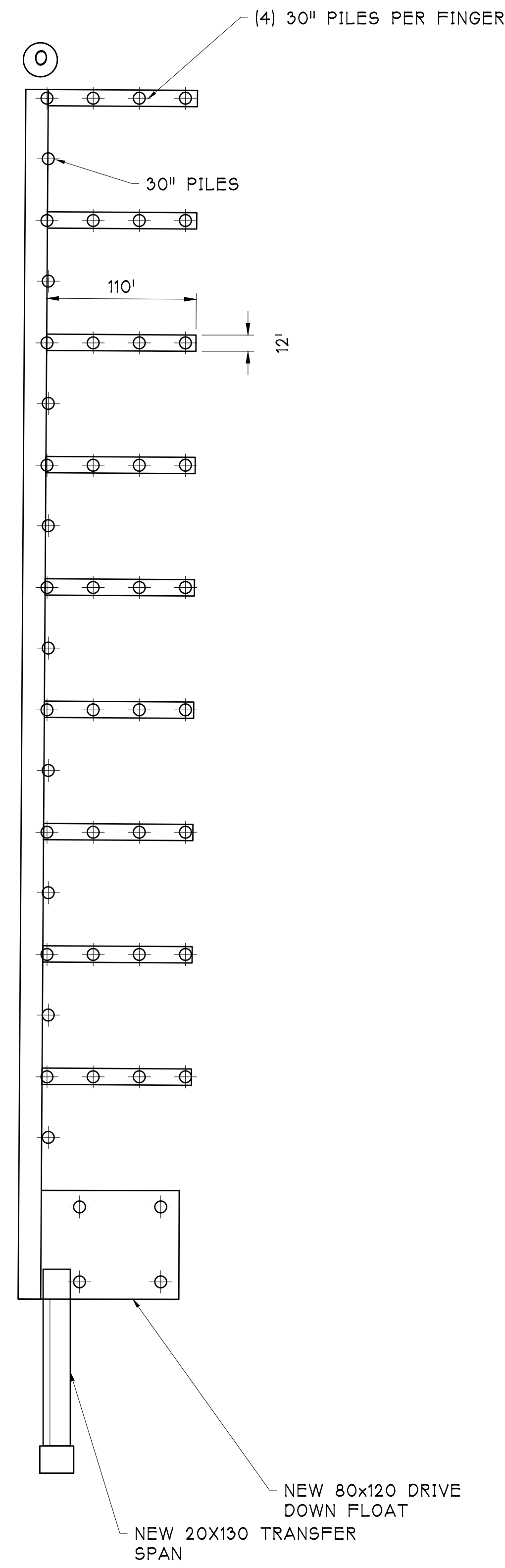
DATE:
 JANUARY 25, 2024

SHEET TITLE:
**CONCEPT
 01**

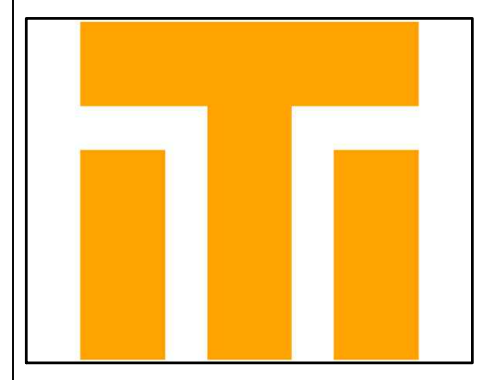
SHEET NUMBER:
H-104

Plotted 7/19/2024 12:27 PM by Allen

C:_Vault\Designs\Proposals\2017\SHH - St. Herman Harbor\Engineering\St. Herman Harbor Floats 3.21.2024.dwg



FLOAT PILE SCHEDULE						
MAIN FLOAT	16"x1/2" PILES	18"x1/2" PILES	20"x1/2" PILES	24"x1/2" PILES	24"x3/4" PILES	30"x3/4" PILES
0						45@98'
DRIVE DOWN					4@90'	
TOTAL					4	45
EMBED, FT	22	25	25	32	32	36



Turnagain
Marine Construction
5050 CORDOVA ST. SUITE 200
ANCHORAGE, AK 99503
PHONE: (907) 261-8960

PROJECT NUMBER:
23-004



City of Kodiak
2410 MILL BAY ROAD
KODIAK, AK 99615
PHONE: (907) 486-8065

NOT FOR
CONSTRUCTION

**ST. HERMAN HARBOR
REPLACE - PHASE I
KODIAK, ALASKA**

REV#	DESCRIPTION	DATE

DATE:
JANUARY 25, 2024

SHEET TITLE:
CONCEPT
01

SHEET NUMBER:
H-104

CONCEPT 01

JULY 18, 2024