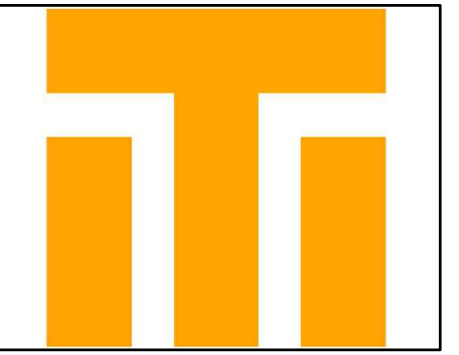
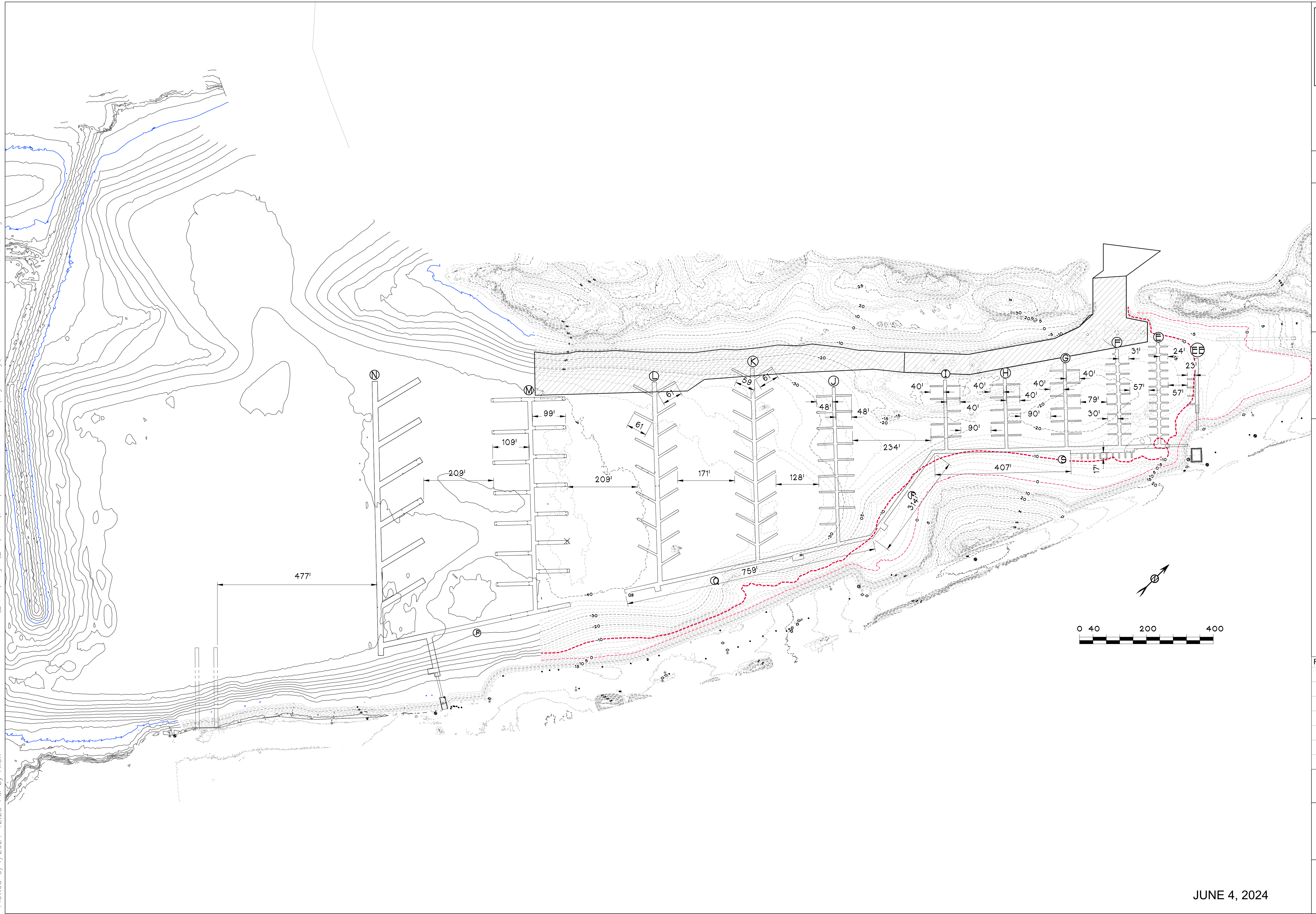


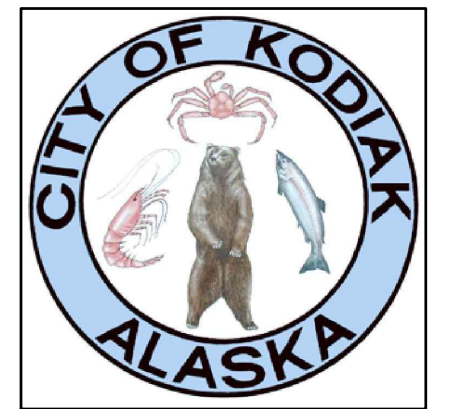
C:\\_Vault\Designs\Proposals\2017\SHH - St Herman Harbor\Engineering\St. Herman Harbor Floats 3.21.2024.dwg

Plotted 6/4/2024 12:25 PM by Allen



**Turnagain**  
Marine Construction  
5050 CORDOVA ST. SUITE 200  
ANCHORAGE, AK 99503  
PHONE: (907) 261-8960

PROJECT NUMBER:  
23-004



City of Kodiak  
2410 MILL BAY ROAD  
KODIAK, AK 99615  
PHONE: (907) 486-8065

**NOT FOR  
CONSTRUCTION**

**ST. HERMAN HARBOR  
REPLACE - PHASE I  
KODIAK, ALASKA**

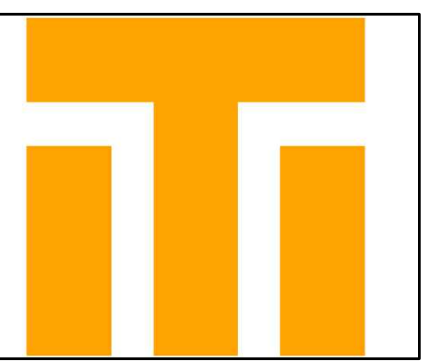
REV#	DESCRIPTION	DATE

DATE:  
JANUARY 25, 2024

SHEET TITLE:  
**EXISTING  
CONDITIONS**

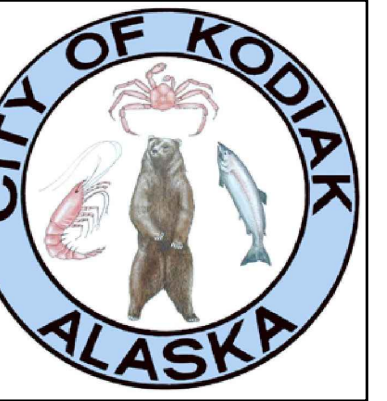
SHEET NUMBER:  
**H-100**

JUNE 4, 2024



**Turnagain**  
Marine Construction  
5050 CORDOVA ST. SUITE 200  
ANCHORAGE, AK 99503  
PHONE: (907) 261-8960

PROJECT NUMBER:  
23-004



City of Kodiak  
2410 MILL BAY ROAD  
KODIAK, AK 99615  
PHONE: (907) 486-8065

NOT FOR  
CONSTRUCTION

ST. HERMAN HARBOR  
REPLACE - PHASE I  
KODIAK, ALASKA

REV# DESCRIPTION DATE

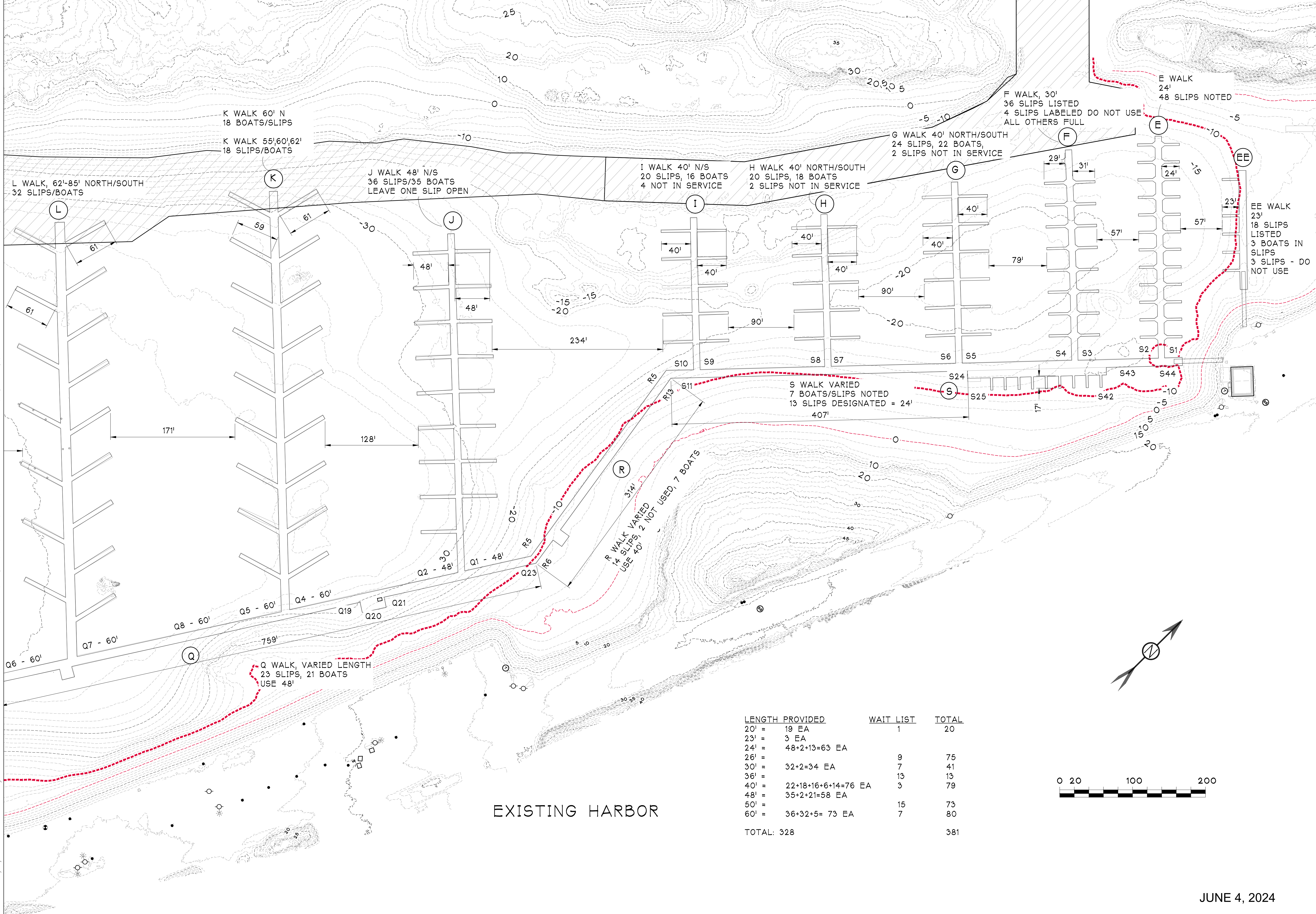
REV#	DESCRIPTION	DATE

DATE:  
JANUARY 25, 2024

SHEET TITLE:  
EXISTING  
CONDITIONS

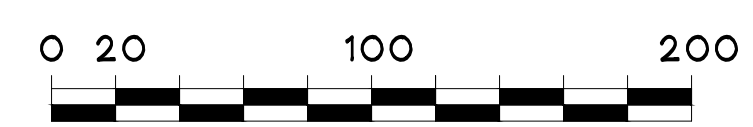
SHEET NUMBER:

H-101



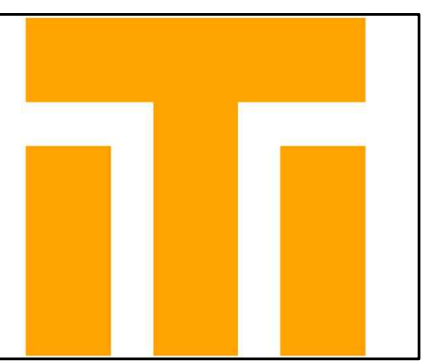
EXISTING HARBOR

LENGTH PROVIDED	WAIT LIST	TOTAL
20' = 19 EA	1	20
23' = 3 EA		
24' = 48+2+13=63 EA		
26' =	9	75
30' = 32+2=34 EA	7	41
36' =	13	13
40' = 22+18+16+6+14=76 EA	3	79
48' = 35+2+21=58 EA		
50' =	15	73
60' = 36+32+5= 73 EA	7	80
TOTAL: 328		381



C:\\_Vault\Designs\Proposals\2017\SHH - St. Herman Harbor\Engineering\St. Herman Harbor\Floors 3.21.2024.dwg  
Plotted 6/4/2024 12:25 PM by Allen

JUNE 4, 2024



**Turnagain**  
Marine Construction  
5050 CORDOVA ST. SUITE 200  
ANCHORAGE, AK 99503  
PHONE: (907) 261-8960

PROJECT NUMBER:  
23-004



City of Kodiak  
2410 MILL BAY ROAD  
KODIAK, AK 99615  
PHONE: (907) 486-8065

NOT FOR  
CONSTRUCTION

ST. HERMAN HARBOR  
REPLACE - PHASE I  
KODIAK, ALASKA

REV# DESCRIPTION DATE

REV#	DESCRIPTION	DATE

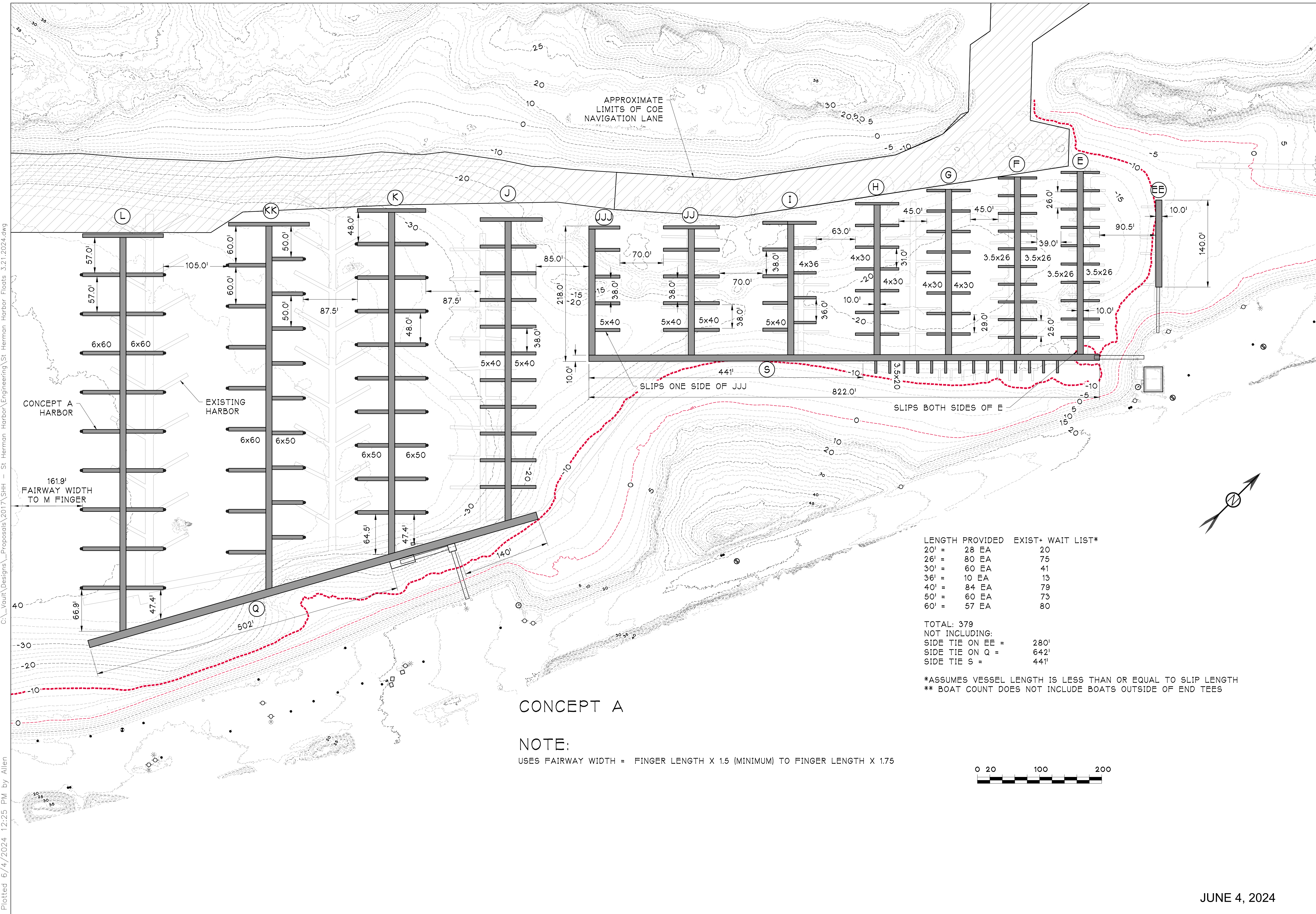
DATE:  
JANUARY 25, 2024

SHEET TITLE:  
CONCEPT A

SHEET NUMBER:

H-102

JUNE 4, 2024



APPROXIMATE  
LIMITS OF COE  
NAVIGATION LANE

CONCEPT A  
HARBOR

EXISTING  
HARBOR

161.9'  
FAIRWAY WIDTH  
TO M FINGER

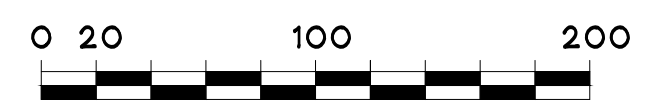
CONCEPT A

NOTE:  
USES FAIRWAY WIDTH = FINGER LENGTH X 1.5 (MINIMUM) TO FINGER LENGTH X 1.75

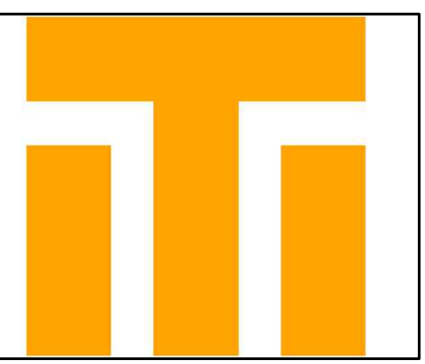
LENGTH PROVIDED	EXIST+ WAIT LIST*
20' = 28 EA	20
26' = 80 EA	75
30' = 60 EA	41
36' = 10 EA	13
40' = 84 EA	79
50' = 60 EA	73
60' = 57 EA	80

TOTAL: 379  
NOT INCLUDING:  
SIDE TIE ON EE = 280'  
SIDE TIE ON Q = 642'  
SIDE TIE S = 441'

\*ASSUMES VESSEL LENGTH IS LESS THAN OR EQUAL TO SLIP LENGTH  
\*\* BOAT COUNT DOES NOT INCLUDE BOATS OUTSIDE OF END TEES

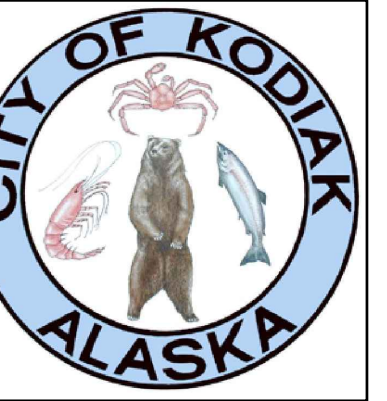


C:\Vault\Designs\Proposals\2017\SHH - St. Herman Harbor\Engineering\St. Herman Harbor Floats 3.21.2024.dwg  
Plotted 6/4/2024 12:25 PM by Allen



**Turnagain**  
Marine Construction  
5050 CORDOVA ST. SUITE 200  
ANCHORAGE, AK 99503  
PHONE: (907) 261-8960

PROJECT NUMBER:  
23-004



City of Kodiak  
2410 MILL BAY ROAD  
KODIAK, AK 99615  
PHONE: (907) 486-8065

NOT FOR  
CONSTRUCTION

ST. HERMAN HARBOR  
REPLACE - PHASE I  
KODIAK, ALASKA

REV# DESCRIPTION DATE

REV#	DESCRIPTION	DATE

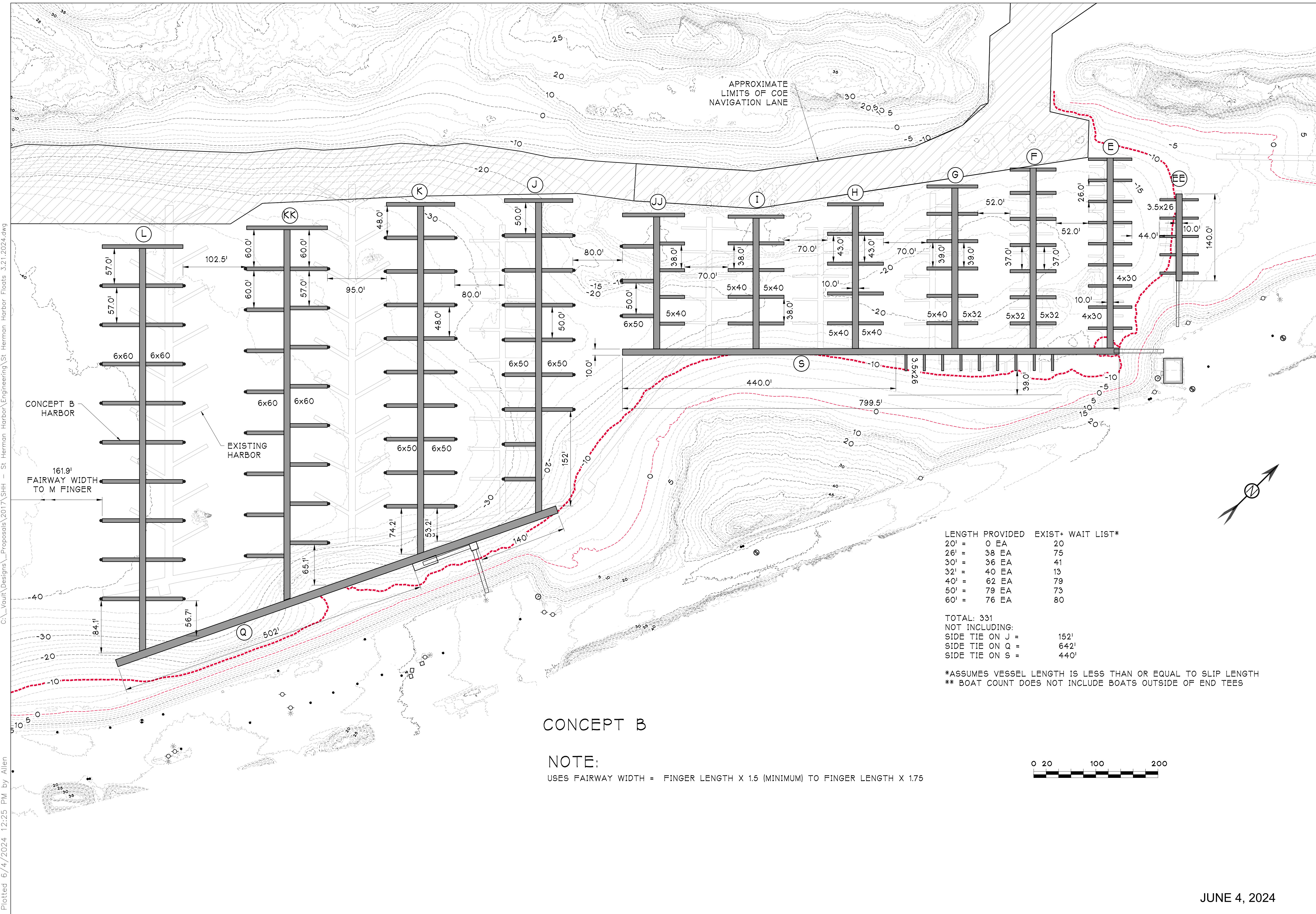
DATE:  
JANUARY 25, 2024

SHEET TITLE:  
CONCEPT B

SHEET NUMBER:

H-103

JUNE 4, 2024



APPROXIMATE  
LIMITS OF COE  
NAVIGATION LANE

CONCEPT B  
HARBOR

EXISTING  
HARBOR

161.9'  
FAIRWAY WIDTH  
TO M FINGER

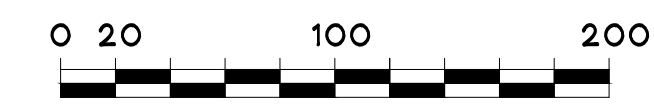
LENGTH PROVIDED	EXIST+ WAIT LIST*
20' = 0 EA	20
26' = 38 EA	75
30' = 36 EA	41
32' = 40 EA	13
40' = 62 EA	79
50' = 79 EA	73
60' = 76 EA	80

TOTAL: 331  
NOT INCLUDING:  
SIDE TIE ON J = 152'  
SIDE TIE ON Q = 642'  
SIDE TIE ON S = 440'

\*ASSUMES VESSEL LENGTH IS LESS THAN OR EQUAL TO SLIP LENGTH  
\*\* BOAT COUNT DOES NOT INCLUDE BOATS OUTSIDE OF END TEES

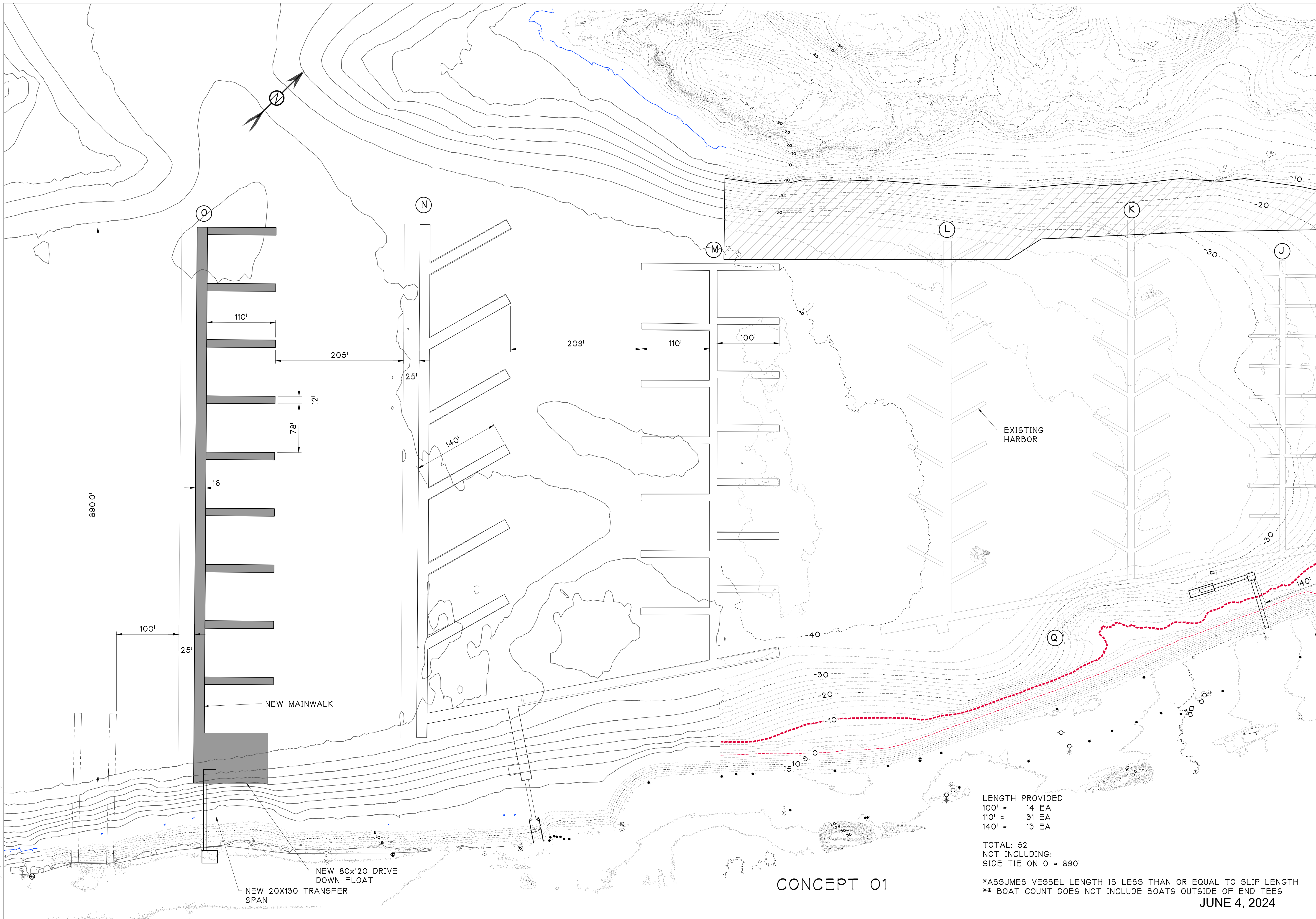
CONCEPT B

NOTE:  
USES FAIRWAY WIDTH = FINGER LENGTH X 1.5 (MINIMUM) TO FINGER LENGTH X 1.75



C:\\_Vault\Designs\Proposals\2017\SHH - St. Herman Harbor\_Engineering\St. Herman Harbor Floats 3.21.2024.dwg  
Plotted 6/4/2024 12:25 PM by Allen

C:\\_Vault\Designs\Proposals\2017\SHH - St. Herman Harbor\Engineering\St. Herman Harbor Floats 3.21.2024.dwg  
 Plotted 6/4/2024 12:25 PM by Allen



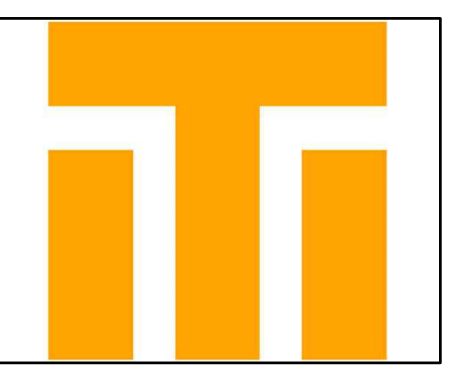
CONCEPT 01

LENGTH PROVIDED  
 100' = 14 EA  
 110' = 31 EA  
 140' = 13 EA

TOTAL: 52  
 NOT INCLUDING:  
 SIDE TIE ON O = 890'

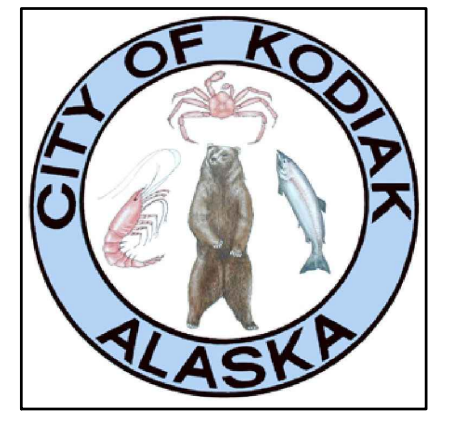
\*ASSUMES VESSEL LENGTH IS LESS THAN OR EQUAL TO SLIP LENGTH  
 \*\* BOAT COUNT DOES NOT INCLUDE BOATS OUTSIDE OF END TEES

JUNE 4, 2024



**Turnagain**  
 Marine Construction  
 5050 CORDOVA ST. SUITE 200  
 ANCHORAGE, AK 99503  
 PHONE: (907) 261-8960

PROJECT NUMBER:  
 23-004



City of Kodiak  
 2410 MILL BAY ROAD  
 KODIAK, AK 99615  
 PHONE: (907) 486-8065

NOT FOR  
 CONSTRUCTION

ST. HERMAN HARBOR  
 REPLACE - PHASE I  
 KODIAK, ALASKA

REV#	DESCRIPTION	DATE

DATE:  
 JANUARY 25, 2024

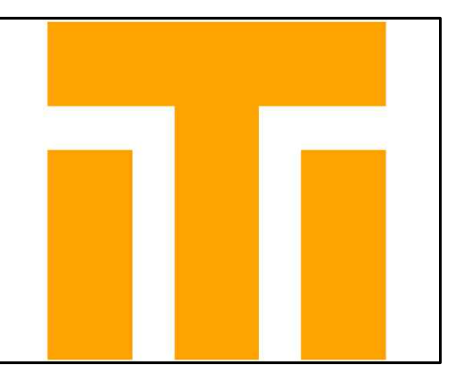
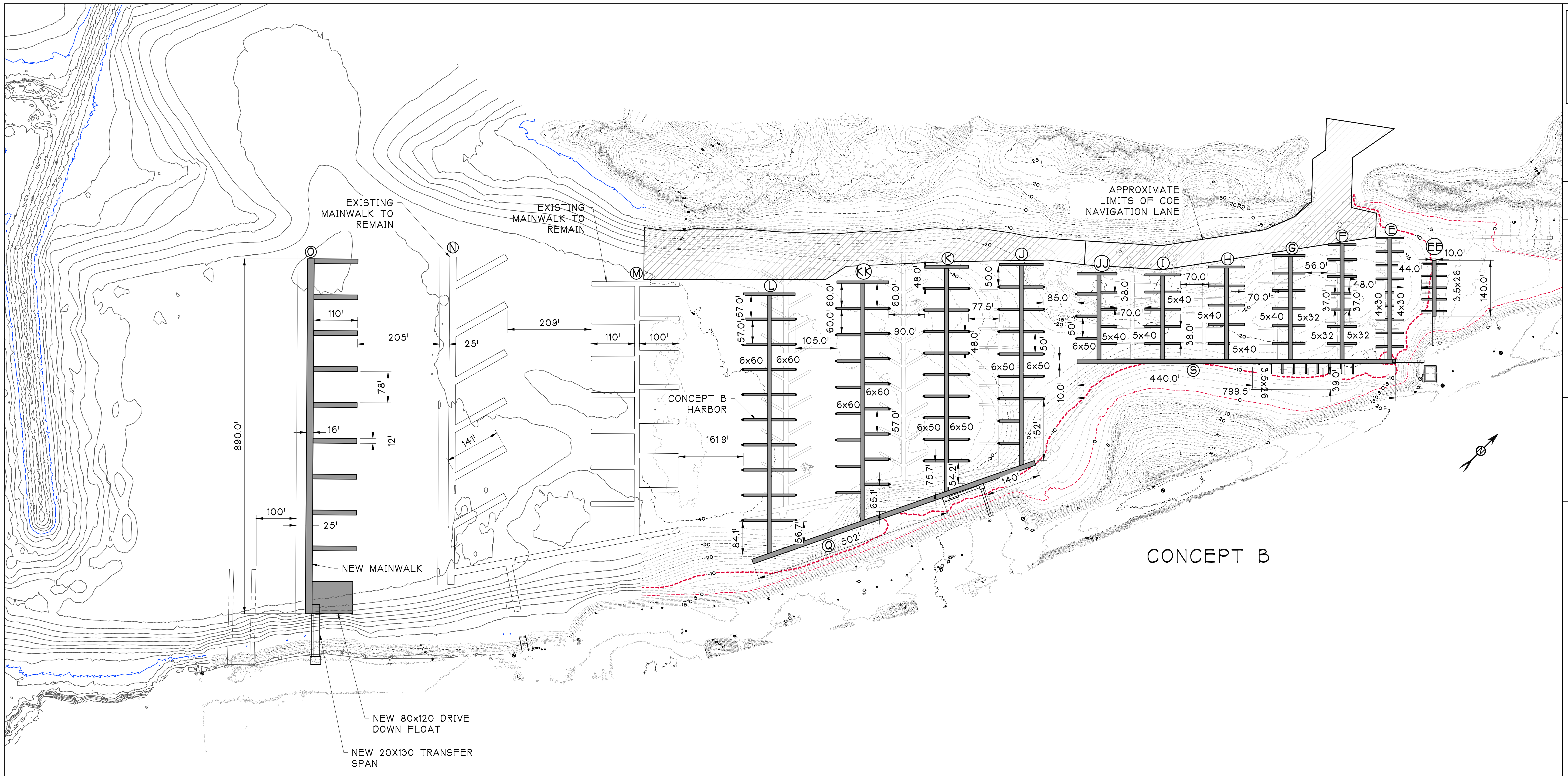
SHEET TITLE:  
 CONCEPT  
 01

SHEET NUMBER:

H-104

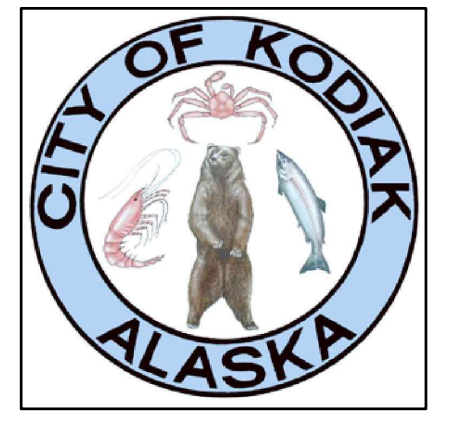
C:\\_Vault\Designs\Proposals\2017\SHH - St Herman Harbor\Engineering\St Herman Harbor Floats 3.21.2024.dwg

Plotted 6/4/2024 12:25 PM by Allen



**Turnagain**  
Marine Construction  
5050 CORDOVA ST. SUITE 200  
ANCHORAGE, AK 99503  
PHONE: (907) 261-8960

PROJECT NUMBER:  
23-004



City of Kodiak  
2410 MILL BAY ROAD  
KODIAK, AK 99615  
PHONE: (907) 486-8065

NOT FOR  
CONSTRUCTION

**ST. HERMAN HARBOR  
REPLACE - PHASE I  
KODIAK, ALASKA**

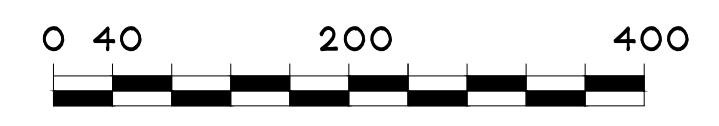
REV#	DESCRIPTION	DATE

DATE:  
JANUARY 25, 2024

SHEET TITLE:  
**CONCEPT B  
&  
CONCEPT 01**

SHEET NUMBER:

**H-105**



JUNE 4, 2024